

Laufenn

Journey in Style

Laufenn

333 Commerce Street, Suite 600

Nashville, TN 37201

Tel. 1-800-426-5665 / Fax. 1-800-847-3765

L4000_0220_01

New for 2020

- 78 new sizes added
- Road Hazard Warranty added for all 5 products

Product Catalog

Contents

Laufenn is	2
Available Sizes	4
S FIT AS	6
G FIT AS	10
X FIT HT	14
X FIT AT	18
I FIT ICE	22
Laufenn Technology	26
Useful Information	32
Limited Warranty	36

Laufenn is

When the Blue that represents rational value and the Red that represents emotional value meet, the Violet of Laufenn is born. Laufenn provides smart consumers both practical value and satisfaction.



Laufenn ensures an exceptional driving experience through optimized performance – in any weather or in any season, rain or snow, summer or winter.

Laufenn provides the performance you need over a wide range of conditions – in your everyday life, under any road conditions, on or off-road.

Confident

The ability Laufenn provides is rooted in its uncompromising commitment to quality. Whether you're going to work or venturing out to a new destination, Laufenn is there with you everyday providing optimized performance and confidence.

Simple

Laufenn is Simple – with no add-ons and nothing to spoil your driving experience. Committed to the basics, Laufenn offers a pure driving experience tailored to your needs.

Open-minded

Laufenn refuses to accept a one-size-fits-all attitude. You know value when you see it and are determined to embrace new choices. Making Laufenn your choice is transforming your own value into a new trend.

Sensible

Laufenn understands your refined taste. You have an extraordinary eye for quality – all at a glance. Your choices are always solid. Laufenn expresses your excellent style and represents your fashionable personality.

Available Sizes

* - 78 New sizes for 2020

S FIT a5 | LH01

	Size		PR	LR
16	*205/55ZR16	91W	4	B
	205/45ZR17	88W XL	4	B
	205/50ZR17	93W XL	4	B
	215/45ZR17	91W XL	4	B
	215/50ZR17	95W XL	4	B
	215/55ZR17	94W	4	B
	225/45ZR17	91W	4	B
	225/50ZR17	94W	4	B
	225/55ZR17	97W	4	B
	235/45ZR17	94W	4	B
17	*235/50ZR17	96W	4	B
	235/55ZR17	99W	4	B
	245/40ZR17	91W	4	B
	245/45ZR17	99W XL	4	B
	*245/50ZR17	99W	4	B
	*215/45ZR18	93Y XL	4	B
	225/40ZR18	92W XL	4	B
	225/45ZR18	95W XL	4	B
	225/50ZR18	95W	4	B
	225/55ZR18	98W	4	B
18	225/60R18	100V	4	B
	235/40ZR18	95W XL	4	B
	235/45ZR18	98W XL	4	B
	235/50ZR18	97W	4	B
	235/55ZR18	100W	4	B
	235/60R18	107V XL	4	B
	235/65R18	106V	4	B
	245/40ZR18	97W XL	4	B
	245/45ZR18	100W XL	4	B
	245/50R18	100W	4	B
18	*245/55ZR18	103W	4	B
	255/35R18	94W XL	4	B
	255/40R18	95W	4	B
	255/45R18	99W	4	B
	*265/35ZR18	97Y XL	4	B

	Size		PR	LR
19	*225/55R19	99V	4	B
	*235/40ZR19	96W XL	4	B
	*235/50R19	103V XL	4	B
	*235/55ZR19	105W XL	4	B
	*245/40ZR19	98Y XL	4	B
	*245/45ZR19	98Y	4	B
	*255/35ZR19	92Y	4	B
	*255/40ZR19	96Y	4	B
	*255/45ZR19	104W XL	4	B
	*255/50ZR19	107W XL	4	B
20	*255/55R19	111V XL	4	B
	*275/40ZR19	105W XL	4	B
	*275/55R19	111V	4	B
	*235/55ZR20	105W XL	4	B
	*245/35ZR20	95Y XL	4	B
	*245/45ZR20	103W XL	4	B
	*245/50R20	102V	4	B
	*255/35ZR20	97W XL	4	B
	*255/45ZR20	105W XL	4	B
	*255/50ZR20	109W XL	4	B
20	*255/55ZR20	110W XL	4	B
	265/50R20	107V	4	B
	*275/40ZR20	106Y XL	4	B
	*275/45ZR20	110Y XL	4	B

	Size		PR	LR
15	*30X9.50R15LT	104S	6	C
	31X10.50R15LT	109R	6	C
17	*35X12.50R17LT	121S	10	E
18	*35X12.50R18LT	123S	10	E
20	*35X12.50R20LT	121S	10	E

X FIT aT | LC01 Metric

	Size		PR	LR
15	235/75R15	109T XL	4	B
	235/70R16	106T	4	B
	245/70R16	107T	4	B
	255/70R16	111T	4	B
16	265/70R16	112T	4	B
	245/75R16	111T	4	B
	265/75R16	116T	4	B
	*235/75R17	109T	4	B
17	245/65R17	107T	4	B
	*255/75R17	115T	4	B
	265/65R17	112T	4	B
	245/70R17	110T	4	B
18	255/70R17	112T	4	B
	265/70R17	115T	4	B
	*255/70R18	113T	4	B
	*265/65R18	114T	4	B
20	*265/70R18	116T	4	B
	275/65R18	116T	4	B
20	*275/55R20	113T	4	B
	*275/60R20	115T	4	B

X FIT aT | LC01 LT-Metric

	Size		PR	LR
15	*33X12.50R15LT	108S	6	C
	LT235/75R15	104/101R	6	C
16	*LT215/85R16	115/112S	10	E
	LT225/75R16	115/112S	10	E
	LT245/75R16	120/116S	10	E
	LT265/75R16	123/120R	10	E
17	LT235/85R16	120/116R	10	E
	*LT285/75R16	126/123S	10	E
	LT245/70R17	119/116R	10	E
	LT265/70R17	121/118S	10	E
18	LT245/75R17	121/118S	10	E
	LT235/80R17	120/117R	10	E
	*LT285/70R17	121/118S	10	E
	*LT265/70R18	124/121S	10	E
20	*LT275/65R18	123/120S	10	E
	*LT275/70R18	125/122S	10	E
	*LT285/65R18	125/122S	10	E
	*LT275/55R20	115/112S	8	D
20	*LT275/60R20	119/116S	8	D
	*LT275/65R20	126/123S	10	E
	*LT305/55R20	121/118S	10	E

G FIT a5 | LH01

	Size		PR	LR
13	175/70R13	82T	4	B
	*185/70R13	86H	4	B
14	175/65R14	82T	4	B
	185/60R14	82H	4	B
	185/65R14	86H	4	B
	185/70R14	88T	4	B
15	195/70R14	91T	4	B
	185/60R15	84H	4	B
	185/65R15	88H	4	B
	*195/55R15	85H	4	B
	195/60R15	88H	4	B
	195/65R15	91H	4	B
	205/60R15	91H	4	B
	205/65R15	94H	4	B
	205/70R15	96T	4	B
	215/60R15	94H	4	B
16	215/65R15	96H	4	B
	215/70R15	98T	4	B
	235/75R15	109T XL	4	B
	205/50R16	87V	4	B
	205/55R16	91V	4	B
	205/60R16	92H	4	B
	205/65R16	95H	4	B
	215/55R16	93V	4	B
	215/60R16	95H	4	B
	215/65R16	98H	4	B
17	225/50R16	92V	4	B
	225/55R16	95V	4	B
	225/60R16	98H	4	B
	*235/60R16	100H	4	B
	235/65R16	103T	4	B
	205/50R17	93H XL	4	B
	215/50R17	95H XL	4	B
	215/55R17	94H	4	B
	215/60R17	96T	4	B
	215/65R17	99H	4	B
17	225/50R17	94H	4	B
	225/55R17	97H	4	B
	225/60R17	99T	4	B
	225/65R17	102T	4	B
17	*235/60R17	102H	4	B

X FIT HT | LD01 Metric

	Size		PR	LR
15	225/70R15	100T	4	B
	215/70R16	100H	4	B
	225/70R16	103H	4	B
	225/75R16	104T	4	B
16	235/70R16	106T	4	B
	245/70R16	107T	4	B
	245/75R16	111T	4	B
	255/70R16	111T	4	B
17	265/70R16	112T	4	B
	265/75R16	116T	4	B
	225/65R17	102T	4	B
	235/65R17	104T	4	B
	*235/70R17	109T XL	4	B
	245/65R17	107T	4	B
	245/70R17	110T	4	B
	*255/65R17	110T	4	B
	*265/60R17	108H	4	B
	265/65R17	112T	4	B
18	265/70R17	115T	4	B
	235/65R18	106T	4	B
	235/60R18	103T	4	B
	245/60R18	105T	4	B
	255/65R18	111H	4	B
	*255/70R18	113H	4	B
	265/60R18	110V	4	B
	*265/65R18	114H	4	B
	*265/70R18	116H	4	B
	275/65R18	116T	4	B
19	*245/55R19	103H	4	B
	*255/60R19	109H	4	B
	*275/55R20	117H XL	4	B
	*275/60R20	115H	4	B
20	*285/50R20	116V XL	4	B

X FIT HT | LD01 LT-Metric

	Size		PR	LR
16	LT225/75R16	115/112S	10	E
	LT235/85R16	120/116Q	10	E
	LT245/75R16	120/116S	10	E
	LT265/75R16	123/120S	10	E
17	LT235/80R17	120/117R	10	E
	LT245/75R17	121/118S	10	E
	LT265/70R17	121/118S	10	E

I FIT ICE | LW71

	Size		PR	LR
14	175/65R14	82T	4	B
	*175/70R14	84T	4	B
	185/65R14	86T	4	B
	185/70R14	88T	4	B
15	195/70R14	91T	4	B
	*185/55R15	86T XL	4	B
	185/60R15	84T	4	B
	185/65R15	88T	4	B
15	195/60R15	88T	4	B
	195/65R15	95T XL	4	B
	205/65R15	94T	4	B
	205/70R15	96T	4	B
	*205/75R15	97T	4	B
	215/70R15	98T	4	B
	235/75R15	105T	4	B
	205/55R16	91T	4	B
	205/60R16	96T XL	4	B
	205/65R16	95T	4	B
16	215/55R16	97T XL	4	B
	215/60R16	99T XL	4	B
	215/65R16	98T	4	B
	215/70R16	100T	4	B
	225/60R16	102T XL	4	B
	225/65R16	100T	4	B
	*225/70R16	103T	4	B
	235/70R16	109T XL	4	B
	*235/75R16	108T	4	B
	215/45R17	91T XL	4	B
17	215/55R17	98T XL	4	B
	*215/60R17	96T	4	B
	215/65R17	99T	4	B
	*225/45R17	94T XL	4	B
	225/50R17	98T XL	4	B
	225/55R17	101T XL	4	B
	225/60R17	99T	4	B
	225/65R17	102T	4	B
	235/45R17	97T XL	4	B
	235/55R17	103T XL	4	B
18	235/65R17	108T XL	4	B
	225/60R18	100T	4	B
	*235/55R18	100T	4	B
	*235/60R18	107T XL	4	B
18	245/45R18	100T XL	4	B
	255/55R18	109T XL	4	B
	*265/60R18	110T	4	B



S FIT as

LH01

Ultra High Performance All-Season Tire



The Ultra-High Performance All-Season 'S FIT AS' provides great handling and grip in high speed conditions for drivers who want exceptional performance and comfort.



Comfort



Handling



Wear life



45K warranty



30 DAY FREE TRIAL



ROAD HAZARD WARRANTY

Tire Features

- Asymmetric tread design
- Long mileage tread compound
- Streamline tread design
- Semi rib design

Driver Benefits

- Optimized wet & dry performance
- Longer tread life
- Highly efficient drainage and increased grip
- Enhanced stability and handling

UTQG : 500 A A

45,000 miles
Tread life warranty

Laufenn

* - New for 2020

S FIT as

Inch	S-Code	Size	LI & S/S	MR	RWR	Maximum		OD (inch)	SW (inch)	TW (inch)	TD (inch,32')	RPM	WT.
						Air (psi)	Load (lbs)						
16	*1024182	205/55ZR16	91W	6.5	5.5-7.5	51	1,356	24.7	8.7	6.6	9.5	840	18.7
17	1017213	205/45ZR17 XL	88W	7	6.5-7.5	50	1,235	24.1	8.4	6.8	9.5	862	17.6
	1017210	205/50ZR17 XL	93W	6.5	5.5-7.5	50	1,433	25	8.8	6.5	9.5	832	18.6
	1017214	215/45ZR17 XL	91W	7	7.0-8.0	50	1,356	24.5	8.7	7.1	9.5	848	19.1
	1017211	215/50ZR17 XL	95W	7	6.0-7.5	50	1,521	25.4	9.4	6.7	9.5	819	22
	1017207	215/55ZR17	94W	7	6.0-7.5	51	1,477	26.2	9.1	6.7	9.5	794	20.8
	1017215	225/45ZR17	91W	7.5	7.0-8.5	51	1,356	24.8	9.2	7.5	9.5	837	19.6
	1017212	225/50ZR17	94W	7	6.0-8.0	51	1,477	25.8	9.7	7	9.5	806	21
	1017208	225/55ZR17	97W	7	6.0-8.0	51	1,609	26.6	9.6	7	9.5	780	24.3
	1017216	235/45ZR17	94W	8	7.5-9.0	51	1,477	25.2	9.6	7.8	9.5	824	20.6
	*1023952	235/50ZR17	96W	7.5	6.5-8.5	51	1,565	26.2	10	7.6	9.5	794	24.2
	1017209	235/55ZR17	99W	7.5	6.5-8.5	51	1,709	27	10	7.4	9.5	769	25.7
	1017218	245/40ZR17	91W	8.5	8.0-9.5	51	1,356	24.6	10.1	8.1	9.5	845	20.2
1017217	245/45ZR17 XL	99W	8	7.5-9.0	50	1,709	25.5	9.9	8.1	9.5	814	23.9	
*1023953	245/50ZR17	99W	7.5	7.0-8.5	51	1,709	26.5	10.6	7.9	9.5	782	25.8	
18	*1023955	215/45ZR18 XL	93Y	7	7.0-8.0	50	1,433	25.5	8.7	7.6	9.5	815	20.2
	1016780	225/40ZR18 XL	92W	8	7.5-9.0	50	1,389	24.9	9.4	7.7	10	833	22.1
	1017222	225/45ZR18 XL	95W	7.5	7.0-8.5	50	1,521	25.8	9.2	7.5	9.5	805	22.5
	1017221	225/50ZR18	95W	7	6.0-8.0	51	1,521	26.8	9.7	7	9.5	776	24.2
	1017219	225/55ZR18	98W	7	6.0-8.0	51	1,653	27.6	9.6	7	9.5	752	25.6
	1018996	225/60R18	100V	6.5	6.0-8.0	51	1,764	28.5	9.3	6.8	9.5	729	26.3
	1017225	235/40ZR18 XL	95W	8.5	8.0-9.5	50	1,521	25.3	9.8	7.8	9.5	822	22.4
	1017223	235/45ZR18 XL	98W	8	7.5-9.0	50	1,653	26.2	9.6	7.8	9.5	793	23.7
	1018984	235/50ZR18	97W	7.5	6.5-8.5	51	1,609	27.2	10	7.4	9.5	765	25.7
	1017220	235/55ZR18	100W	7.5	6.5-8.5	51	1,764	28	10	7.4	9.5	741	27.1
	1018998	235/60R18 XL	107V	7	6.5-8.5	50	2,149	29	9.6	7	9.5	717	29.7
	1018994	235/65R18	106V	7	6.5-8.5	51	2,094	29.9	9.5	7.2	9.5	695	28.5
	1017226	245/40ZR18 XL	97W	8.5	8.0-9.5	50	1,609	25.6	10.1	8.1	9.5	812	23.3
	1017224	245/45ZR18 XL	100W	8	7.5-9.0	50	1,764	26.5	9.9	8.1	9.5	783	24.9
	1018986	245/50R18	100W	7.5	7.0-8.5	51	1,764	27.7	9.8	7.7	9.5	728	26.9
	*1023954	245/55ZR18	103W	7.5	7.0-8.5	51	1,929	28.5	10.4	7.9	9.5	729	27.8
	1018992	255/35R18 XL	94W	9	8.5-10.0	50	1,477	25.1	10	8.5	9.5	805	21.6
	1018990	255/40R18	95W	9	8.5-10.0	51	1,521	26	10.2	8.5	9.5	775	25.1
	1018988	255/45R18	99W	8.5	8.0-9.5	51	1,709	27	10	8.4	9.5	746	26.6
	*1023956	265/35ZR18 XL	97Y	9.5	9.0-10.5	50	1,609	25.2	11	9.3	10	825	25.4
19	*1023959	225/55R19	99V	7	6.0-8.0	51	1,709	28.6	9.6	7.2	9.5	726	27.3
	*1023960	235/40ZR19 XL	96W	8.5	8.0-9.5	50	1,565	26.3	9.8	8	9.5	791	23.5
	*1023961	235/50R19 XL	103V	7.5	6.5-8.5	50	1,929	28.2	10	7.6	9.5	738	28.7
	*1023957	235/55ZR19 XL	105W	7.5	6.5-8.5	50	2,039	29	10	8	9.5	716	30.3
	*1023962	245/40ZR19 XL	98Y	8.5	8.0-9.5	50	1,653	26.6	10.1	8.6	10	782	25.9
	*1023958	245/45ZR19	98Y	8	7.5-9.0	51	1,653	27.5	9.9	8.6	10	755	27.3
	*1023963	255/35ZR19	92Y	9	8.5-10.0	51	1,389	25.9	10.6	8.9	9.5	803	23.5
	*1023964	255/40ZR19	96Y	9	8.5-10.0	51	1,565	26.9	10.6	8.9	10	772	27.2
	*1023965	255/45ZR19 XL	104W	8.5	8.0-9.5	50	1,984	27.9	10.4	8.7	9.5	744	27.4
	*1023966	255/50ZR19 XL	107W	8	7.0-9.0	50	2,149	28.9	11	8.7	9.5	718	31.2
	*1023967	255/55R19 XL	111V	8	7.0-9.0	50	2,403	29.9	10.9	8.3	9.5	695	32.7
	*1023968	275/40ZR19 XL	105W	9.5	9.0-11.0	50	2,039	27.5	11.3	9.3	9.5	755	28.4
*1023969	275/55R19	111V	8.5	7.5-9.5	51	2,403	30.7	11.7	8.9	9.5	675	36.9	
20	*1023970	235/55ZR20 XL	105W	7.5	6.5-8.5	50	2,039	30	10	8	9.5	692	31.8
	*1023975	245/35ZR20 XL	95Y	8.5	8.0-9.5	50	1,521	26.6	10	8.6	10	780	25.2
	*1023971	245/45ZR20 XL	103W	8	7.5-9.0	50	1,929	28.5	9.9	8.3	9.5	728	27.4
	*1023976	245/50R20	102V	7.5	7.0-8.5	51	1,874	29.5	10.6	7.9	9.5	703	30.6
	*1023977	255/35ZR20 XL	97W	9	8.5-10.0	50	1,609	26.9	10.6	8.7	9.5	773	25.5
	*1023978	255/45ZR20 XL	105W	8.5	8.0-9.5	50	2,039	28.9	10.4	8.7	9.5	718	29.2
	*1023972	255/50ZR20 XL	109W	8	7.0-9.0	50	2,271	29.9	11	8.7	9.5	694	32.8
	*1023973	255/55ZR20 XL	110W	8	7.0-9.0	50	2,337	30.9	10.9	8.7	9.5	673	35.6
	*1023974	265/50R20	107V	8.5	7.5-9.5	51	2,149	30.3	11.3	8.6	9.5	685	32.4
	*1023979	275/40ZR20 XL	106Y	9.5	9.0-11.0	50	2,094	28.5	11.3	9.6	10	728	33.7
*1023980	275/45ZR20 XL	110W	9	8.5-10.5	50	2,337	29.6	11.1	9.3	9.5	701	34.3	

PR: Ply Rating / LR: Load Range / MR: Measuring Rim / OD: Overall Diameter / SW: Section Width / TW: Tread Width / TD: Tread Depth / RPM: Revolution Per Mile /



G FIT *as*

LH41

Touring Performance All-Season Tire



The High Performance All-Season 'G FIT AS' provides impressive all-season performance along with long tread life.

Tire Features	Driver Benefits
<ul style="list-style-type: none"> • Wide straight groove • Wide tread profile • Long mileage tread compound • Low noise pattern design 	<ul style="list-style-type: none"> • Highly efficient drainage • Greater stability and handling performance • Longer tread life • Quiet driving experience
UTQG : 500 A A	60,000 miles Tread life warranty

Comfort

Dry

Wear life

* - New for 2020

Inch	S-Code	Size	LI & S/S	MR	RWR	Maximum		OD (inch)	SW (inch)	TW (inch)	TD (inch,32')	RPM	WT.	
						Air (psi)	Load (lbs)							
13	1016769	175/70R13	82T	5	4.5-6.0	51	1,047	22.5	7	5	9	922	13.5	
	*1023925	185/70R13	86H	5.5	4.5-6.0	51	1,168	23.1	7.5	5.7	9	898	15.3	
14	1016770	175/65R14	82T	5	5.0-6.0	51	1,047	22.8	7.3	5.3	9	911	14.1	
	1016771	185/60R14	82H	5.5	5.0-6.5	51	1,047	22.6	7.8	5.5	9	920	14.6	
	1016750	185/65R14	86H	5.5	5.0-6.5	51	1,168	23.3	7.8	5.5	9	892	15.4	
	1016751	185/70R14	88T	5.5	4.5-6.0	51	1,235	24.1	7.5	5.3	9	863	15.9	
	1016752	195/70R14	91T	6	5.0-6.5	51	1,356	24.7	7.8	5.5	9	842	16.7	
15	1016772	185/60R15	84H	5.5	5.0-6.5	51	1,102	23.6	7.8	5.5	9	881	15.5	
	1016749	185/65R15	88H	5.5	5.0-6.5	51	1,235	24.3	7.8	5.5	9	855	16.3	
	*1019034	195/55R15	85H	6	5.5-7.0	51	1,135	23.3	8.4	6.3	9	893	15.9	
	1016753	195/60R15	88H	6	5.5-7.0	51	1,235	24	8.3	5.8	9	864	16.7	
	1016754	195/65R15	91H	6	5.5-7.0	51	1,356	24.8	8.1	5.8	9	836	17.4	
	1016755	205/60R15	91H	6	5.5-7.5	51	1,356	24.5	8.7	6.1	9.5	847	17.8	
	1016756	205/65R15	94H	6	5.5-7.0	51	1,477	25.3	8.5	6.1	9.5	821	19.8	
	1016757	205/70R15	96T	6	5.0-7.0	51	1,565	26.2	8.2	5.8	9.5	792	19.4	
	1016773	215/60R15	94H	6.5	6.0-7.5	51	1,477	25	9	6.5	9.5	832	19.5	
	1016774	215/65R15	96H	6.5	6.0-7.5	51	1,565	25.8	8.9	6.5	9.5	804	20.8	
	1016758	215/70R15	98T	6.5	5.5-7.0	51	1,653	26.8	8.6	6.1	9.5	776	21.5	
	1019008	235/75R15 XL	109T	6.5	6.0-8.0	50	2,271	28.7	9.1	6.7	9.5	723	28	
	16	1016775	205/50R16	87V	6.5	5.5-7.5	51	1,201	23.9	8.9	6.5	9.5	870	17.6
1016759		205/55R16	91V	6.5	5.5-7.5	51	1,356	24.7	8.7	6.5	9.5	842	18.9	
1016760		205/60R16	92H	6	5.5-7.5	51	1,389	25.5	8.7	6.1	9.5	814	19.2	
1016776		205/65R16	95H	6	5.5-7.5	51	1,521	26.3	8.5	6.1	9.5	790	20.5	
1016761		215/55R16	93V	7	6.0-7.5	51	1,433	25	9.2	6.8	9.5	829	20	
1016762		215/60R16	95H	6.5	6.0-7.5	51	1,521	26	9	6.5	9.5	800	20.8	
1016763		215/65R16	98H	6.5	6.0-7.5	51	1,653	26.8	8.9	6.5	9.5	774	22.9	
1016777		225/50R16	92V	7	6.0-8.0	51	1,389	24.7	9.8	7	9.5	842	20.6	
1016778		225/55R16	95V	7	6.0-8.0	51	1,521	25.5	9.6	7	9.5	814	23.2	
1016764		225/60R16	98H	6.5	6.0-8.0	51	1,653	26.4	9.4	6.8	9.5	786	22.6	
*1023926		235/60R16	100H	7	6.5-8.5	51	1,764	27	9.7	7.4	9.5	770	25.7	
1019010		235/65R16	103T	7	6.5-8.5	51	1,929	27.9	9.5	7	9.5	744	25.6	
17		1019022	205/50R17 XL	93H	6.5	5.5-7.5	50	1,433	25	8.8	6.5	9.5	832	19.3
		1019024	215/50R17 XL	95H	7	6.0-7.5	50	1,521	25.4	9.4	6.8	9.5	819	21.6
	1019018	215/55R17	94H	7	6.0-7.5	51	1,477	26.2	9.1	6.7	9.5	794	21	
	1019014	215/60R17	96T	6.5	6.0-7.5	51	1,565	27	9	6.5	9.5	770	23.3	
	1016779	215/65R17	99H	6.5	6.0-7.5	51	1,709	28	8.9	6.5	9.5	741	24.3	
	1019026	225/50R17	94H	7	6.0-8.0	51	1,477	25.8	9.7	7.1	9.5	806	21.2	
	1019020	225/55R17	97H	7	6.0-8.0	51	1,609	26.6	9.6	7	9.5	780	24	
	1019016	225/60R17	99T	6.5	6.0-8.0	51	1,709	27.4	9.3	6.8	9.5	757	24.6	
	1019012	225/65R17	102T	6.5	6.0-8.0	51	1,874	28.3	9.1	6.8	9.5	734	25.2	
	*1023951	235/60R17	102H	7	6.5-8.5	51	1,874	28	9.7	7.4	9.5	742	27.5	

PR: Ply Rating / LR: Load Range / MR: Measuring Rim / OD: Overall Diameter / SW: Section Width / TW: Tread Width / TD: Tread Depth / RPM: Revolution Per Mile / * - New for 2020



X FIT HT

LD01

LT & SUV Highway Terrain All-Season Tire



Specifically designed for SUV, CUV & light truck drivers who desire a comfortable and composed on-road ride. The 'X FIT HT' provides great handling and all-season performance.

Tire Features	Driver Benefits
<ul style="list-style-type: none"> • 2 in 1 block shoulder design • Long mileage tread compound • Snow kerf • Stone ejectors 	<ul style="list-style-type: none"> • Secure stability during cornering • Optimal performance in all weather conditions • Long tread life & improved grip • Prevent stone drilling
UTQG : 620 A B	60,000 miles Tread life warranty (Metric Only)


 Handling


 Comfort


 Wear life


60K
 warranty


30 DAY
 FREE TRIAL


ROAD HAZARD
 WARRANTY

Laufenn

* - New for 2020

X FIT HT

Inch	S-Code	Size	LI & S/S	MR	RWR	Maximum		OD (inch)	SW (inch)	TW (inch)	TD (inch,32")	RPM	WT.
						Air (psi)	Load (lbs)						
Metric													
15	1017227	225/70R15	100T	6.5	6.0-7.5	51	1,764	27.4	9	6.8	10.5	758	26.1
16	1019688	215/70R16	100H	6.5	6.0-8.0	51	1,764	27.9	8.7	6.5	10.5	744	25.7
	1019690	225/70R16	103H	6.5	6.0-7.5	51	1,929	28.5	9.1	6.8	10.5	729	27.6
	1019692	225/75R16	104T	6	6.0-7.5	51	1,984	29.3	8.9	6.8	10.5	710	28.6
	1017229	235/70R16	106T	7	6.0-8.0	51	2,094	29	9.5	7	10.5	716	29
	1019694	245/70R16	107T	7	6.5-8.0	51	2,149	29.6	9.9	7.4	10.5	702	31.3
	1017228	245/75R16	111T	7	6.5-8.0	51	2,403	30.4	9.8	7.3	10.5	682	33.8
	1017230	255/70R16	111T	7.5	6.5-8.5	51	2,403	30.1	10.3	7.6	10.5	689	35.1
	1017231	265/70R16	112T	8	7.0-9.0	51	2,469	30.7	10.7	8	10.5	677	37.1
	1019556	265/75R16	116T	7.5	7.0-9.0	51	2,756	31.6	10.6	8	10.5	657	37.2
17	1017233	225/65R17	102T	6.5	6.0-8.0	51	1,874	28.6	9.4	6.9	10.5	727	28.2
	1017234	235/65R17	104T	7	6.5-8.5	51	1,984	29.1	9.9	7.2	10.5	714	29.5
	*1023981	235/70R17 XL	109T	7	6.0-8.0	50	2,271	30	9.5	7	10.5	692	32.9
	1017235	245/65R17	107T	7	7.0-8.5	51	2,149	29.6	10.4	7.6	10.5	702	31.6
	1017232	245/70R17	110T	7	6.5-8.0	51	2,337	30.6	10	7.3	10.5	679	33.4
	*1023982	255/65R17	110T	7.5	7.0-9.0	51	2,336	30.1	10.5	7.9	10.5	691	35.3
	*1023983	265/60R17	108H	8	7.5-9.5	51	2,205	29.5	11.1	8.1	10.5	703	33.7
	1019696	265/65R17	112T	8	7.5-9.5	51	2,469	30.6	11.1	8.1	10.5	679	37.2
	1016781	265/70R17	115T	8	7.0-9.0	51	2,679	31.7	10.7	8.1	10.5	655	38.8
	18	1017236	235/65R18	106T	7	6.5-8.5	51	2,094	30.1	9.9	7.2	10.5	690
1017237		235/60R18	103T	7	6.5-8.5	51	1,929	29.1	9.9	7.2	10.5	713	29.9
1017238		245/60R18	105T	7	7.0-8.5	51	2,039	29.6	10.2	7.6	10.5	701	31.5
1019698		255/65R18	111H	7.5	7.0-9.0	51	2,403	31.1	10.6	7.9	10.5	668	36
*1023984		255/70R18	113H	7.5	6.5-8.5	51	2,535	32.1	10	10.9	10.5	647	37.1
1019700		265/60R18	110V	8	7.5-9.5	51	2,337	30.6	11.1	8.1	10.5	680	36.9
*1023985		265/65R18	114H	8	7.5-9.5	51	2,601	31.5	11.1	8.1	10.5	659	38.7
*1023986		265/70R18	116H	8	7.0-9.0	51	2,756	32.6	10.6	8	10.5	637	39
1019702		275/65R18	116T	8	7.5-9.5	51	2,756	32.1	11.4	8.5	10.5	646	39.6
19		*1023987	245/55R19	103H	7.5	7.0-8.5	51	1,929	29.5	10.5	7.7	10	703
	*1023988	255/60R19	109H	7.5	7.0-9.0	51	2,271	30.9	10.8	7.9	10.5	671	35.3
20	*1023989	275/55R20 XL	117H	8.5	7.5-9.5	50	2,833	31.7	11.7	8.7	10	655	39.9
	*1023990	275/60R20	115H	8	7.5-9.5	51	2,679	32.9	11.4	8.5	10.5	632	41.1
	*1023991	285/50R20 XL	116V	9	8.0-10.0	50	2,756	31.1	12.3	9	10	668	40.1

LT-Metric													
16	2020465	LT225/75R16	115/112S	6	6.0-7.5	80	2,680/2,470	29.2	8.8	6.7	13	715	38.7
	2020467	LT235/85R16	120/116Q	6.5	6.0-7.5	80	3,042/2,778	31.7	9.1	6.6	13	660	42.2
	2020469	LT245/75R16	120/116S	7	6.5-8.0	80	3,042/2,778	30.4	9.6	7.3	13	687	41.4
	2020462	LT265/75R16	123/120S	7.5	7.0-9.0	80	3,415/3,085	31.6	10.5	7.9	13	661	46.2
17	2020471	LT235/80R17	120/117R	6.5	6.0-8.0	80	3,085/2,835	31.7	9	6.6	13	659	42.5
	2020473	LT245/75R17	121/118S	7	6.5-8.0	80	3,195/2,910	31.4	9.6	7.3	13	665	43.7
	2020475	LT265/70R17	121/118S	8	7.0-9.0	80	3,195/2,910	31.6	10.6	8	13	662	46.3

PR: Ply Rating/LR: Load Range/MR: Measuring Rim/OD: Overall Diameter/
 SW: Section Width/TW: Tread Width/TD: Tread Depth/RPM: Revolution Per Mile /
 Road Hazard does not apply to LT-Metric sizes.



X FIT *at*

LC01

LT & SUV All-Terrain All-Season Tire



The All-Terrain All-Season 'X FIT AT' is designed for comfort and provides impressive performance in both on and off-road conditions.

Tire Features

- Asymmetric tread design
- Long mileage tread compound
- Streamline tread design
- Rim protector

Driver Benefits

- Resistance from external damage
- Improved traction and braking performance
- Prevent sidewall damage and offer extra traction

UTQG : 520 A B

45,000 miles
Tread life warranty
(Metric Only)



Off Road



Traction



Durability



45K
warranty



30 DAY
FREE
TRIAL



ROAD
HAZARD
WARRANTY

Laufenn

* - New for 2020

X FIT *at*

Inch	S-Code	Size	LI & S/S	MR	RWR	Maximum		OD (inch)	SW (inch)	TW (inch)	TD (inch,32")	RPM	WT.
						Air (psi)	Load (lbs)						
Metric													
15	1016612	235/75R15 XL	109T	6.5	6.0-8.0	50	2,270	28.8	9.3	6.9	11.5	721	30.2
16	1016613	235/70R16	106T	7	6.0-8.0	51	2,094	29	9.4	7.2	12.5	717	30.3
	1016606	245/70R16	107T	7	6.5-8.0	51	2,149	29.5	9.9	7.3	12.5	704	31.5
	1016609	255/70R16	111T	7.5	6.5-8.5	51	2,403	30	10.2	7.6	12.5	691	34.5
	1016604	265/70R16	112T	8	7.0-9.0	51	2,469	30.6	10.7	8	12.5	678	36.5
	1016608	245/75R16	111T	7	6.5-8.0	51	2,403	30.4	9.7	7.3	12.5	682	34.3
	1019297	265/75R16	116T	7.5	7.0-9.0	51	2,601	31.6	10.3	8	12.5	656	37.5
17	*1023992	235/75R17	109T	6.5	6.0-8.0	51	2,271	30.9	9.3	7	12.5	673	33.9
	1016607	245/65R17	107T	7	7.0-8.5	51	2,149	29.5	10.1	7.6	12.5	703	31.6
	*1023993	255/75R17	115T	7	6.5-8.5	51	2,679	32	10.1	7.6	12.5	649	39.6
	1016605	265/65R17	112T	8	7.5-9.5	51	2,469	30.5	10.6	8.1	12.5	680	35.4
	1016603	245/70R17	110T	7	6.5-8.0	51	2,337	30.5	9.7	7.3	12.5	681	34.1
	1016602	255/70R17	112T	7.5	6.5-8.5	51	2,469	31.1	10.2	6.5	12.5	669	36.1
	1016611	265/70R17	115T	8	7.0-9.0	51	2,535	31.6	10.6	8	12.5	657	37.4
	*1023995	255/70R18	113T	7.5	6.5-8.5	51	2,535	32	10.5	7.6	12.5	648	39.8
18	*1023996	265/65R18	114T	8	7.5-9.5	51	2,601	31.5	10.9	8.1	12.5	659	40.2
	*1023997	265/70R18	116T	8	7.0-9.0	51	2,756	32.6	10.6	8	12.5	636	41.5
	1016610	275/65R18	116T	8	7.5-9.5	51	2,756	32.1	11.2	8.4	12.5	647	39.2
	*1023998	275/55R20	113T	8.5	7.5-9.5	51	2,535	31.8	11.6	9.2	11.5	653	41.7
20	*1023999	275/60R20	115T	8	7.5-9.5	51	2,679	32.9	11.4	9.1	11.5	632	44.4

LT-Metric

15	*2021149	33X12.50R15LT	108S	10	8.0-10.5	35	2,205	32.5	12.5	9.5	16	643	54.9
	2020163	LT235/75R15	104/101R	6.5	6.0-8.0	50	1,985/1,820	28.8	9.1	7.1	15.5	721	36.5
16	*2021136	LT215/85R16	115/112S	6	5.5-7.0	80	2,680/2,470	30.3	8.1	6.5	15	691	40.8
	2020169	LT225/75R16	115/112S	6	6.0-7.5	80	2,680/2,470	29.2	8.5	6.9	15	716	38.8
	2020171	LT245/75R16	120/116S	7	6.5-8.0	80	3,042/2,778	30.4	9.6	7.4	15.5	689	44
	2020404	LT265/75R16	123/120R	7.5	7.0-9.0	80	3,415/3,085	31.6	10.3	8.3	15.5	661	49.6
	2020168	LT235/85R16	120/116R	6.5	6.0-7.5	80	3,042/2,778	31.6	8.7	7	15.5	661	43.9
	*2020406	LT285/75R16	126/123S	8	7.5-9.5	80	3,750/3,415	32.8	11.1	8.4	15.5	637	58
17	2020165	LT245/70R17	119/116R	7	6.5-8.0	80	3,000/2,755	30.5	9.5	7.4	16	685	43.4
	2020170	LT265/70R17	121/118S	8	7.0-9.0	80	3,195/2,910	31.6	10.5	8.2	15.5	661	47.8
	2020166	LT245/75R17	121/118S	7	6.5-8.0	80	3,195/2,910	31.5	9.4	7.4	15	664	45.9
	2020164	LT235/80R17	120/117R	6.5	6.0-8.0	80	3,085/2,835	31.7	8.8	7.1	15.5	659	44.6
	*2021137	LT285/70R17	121/118S	8.5	7.5-9.5	80	3,195/2,910	32.7	11.2	8.7	15.5	639	58.8
18	*2021139	LT265/70R18	124/121S	8	7.0-9.0	80	3,525/3,195	32.6	10.4	8.1	15	641	51.3
	*2021140	LT275/65R18	123/120S	8	8.0-9.5	80	3,415/3,085	32	11	8.3	14	653	58.8
	*2021141	LT275/70R18	125/122S	8	7.0-9.0	80	3,640/3,305	33.1	10.8	8.3	15	631	60.9
	*2021142	LT285/65R18	125/122S	8.5	8.5-10.0	80	3,640/3,305	32.5	11.5	8.3	15	643	60.5
20	*2021145	LT275/55R20	115/112S	8.5	8.0-9.5	65	2,680/2,470	31.8	11.6	8.7	14.5	657	55.5
	*2021146	LT275/60R20	119/116S	8	8.0-9.5	65	3,000/2,755	33	11.3	9.6	14.5	634	55.1
	*2021147	LT275/65R20	126/123S	8	8.0-9.5	80	3,750/3,415	34	11.2	8.3	15	614	63.6
	*2021148	LT305/55R20	121/118S	9.5	9.0-11.0	65	3,195/2,910	33.2	12.4	9.6	15	629	65.6

Flotation

15	*2021134	30X9.50R15LT	104S	7.5	6.0-8.0	50	1,985	29.5	8.9	7.2	15.5	709	38.6
	2020167	31X10.50R15LT	109R	8.5	7.0-9.0	50	2,270	30.5	10.1	8.1	15.5	686	41.4
17	*2021138	35X12.50R17LT	121S	10	8.0-10.5	65	3,195	34.5	12	9.6	15.5	606	65.8
18	*2021143	35X12.50R18LT	123S	10	8.5-11.0	65	3,415	34.6	12.1	9.6	15.5	605	70.3
20	*2021144	35X12.50R20LT	121S	10	8.5-11.0	65	3,195	34.5	12.5	10	15	606	71.3

PR: Ply Rating/LR: Load Range/MR: Measuring Rim/OD: Overall Diameter/
SW: Section Width/TW: Tread Width/TD: Tread Depth/RPM: Revolution Per Mile /
Road Hazard does not apply to LT-Metric sizes.



FIT ICE

LW71

Studdable Winter Tire



The Winter Studdable 'I FIT Ice' provides improved safety and comfort on snow and ice covered road conditions.

Tire Features

- Advanced stud technology
- Snow slit design
- 3D kerf design
- Claw edge

Driver Benefits

- Excellent braking on icy surfaces
- Enhanced braking and traction in snow & ice conditions
- Enhanced handling on snow
- Maximized snow traction



Ice



Snow



Wet



Braking



Laufenn

* - New for 2020

FIT ICE

Inch	S-Code	Size	LI & S/S	MR	RWR	Maximum		OD (inch)	SW (inch)	TW (inch)	TD (inch,32')	RPM	WT.	
						Air (psi)	Load (lbs)							
14	1020071	175/65R14	82T	5	5.0-6.0	51	1,047	22.9	7.3	5.5	11.5	909	16	
	*1020072	175/70R14	84T	5	4.5-6.0	51	1,102	23.6	7	5.2	11.5	882	16.4	
	1019462	185/65R14	86T	5.5	5.0-6.5	51	1,168	23.5	7.7	5.8	11.5	885	17.7	
	1019460	185/70R14	88T	5.5	4.5-6.0	51	1,235	24.3	7.4	5.5	11.5	855	17.4	
	1020073	195/70R14	91T	6	5.0-6.5	51	1,356	24.7	7.9	5.8	11.5	842	19.1	
15	*1020530	185/55R15 XL	86T	6	5.0-6.5	50	1,168	22.9	7.8	5.8	11.5	908	16.9	
	1019456	185/60R15	84T	5.5	5.0-6.5	51	1,102	23.7	7.8	6.1	11.5	875	17.7	
	1019458	185/65R15	88T	5.5	5.0-6.5	51	1,235	24.5	7.7	5.8	11.5	849	18.7	
	1019454	195/60R15	88T	6	5.5-7.0	51	1,235	24.2	8.2	6.5	11.5	858	19.3	
	1017493	195/65R15 XL	95T	6	5.5-7.0	50	1,521	25	8.1	6.5	12	831	22.6	
	1017479	205/65R15	94T	6	5.5-7.0	51	1,477	25.5	8.5	6.5	11.5	816	21.1	
	1017480	205/70R15	96T	6	5.0-7.0	51	1,565	26.4	8.2	6.1	11.5	787	21.8	
	*1020531	205/75R15	97T	5.5	5.0-7.0	51	1,609	27	7.8	6.1	11.5	769	24.5	
	1017481	215/70R15	98T	6.5	5.5-7.0	51	1,653	26.9	8.6	6.5	11.5	771	24.1	
	1020078	235/75R15	105T	6.5	6.0-8.0	51	2,039	28.7	9.1	7	11.5	723	30	
	16	1017472	205/55R16	91T	6.5	5.5-7.5	51	1,356	24.9	8.8	6.8	12	835	20.4
		1017484	205/60R16 XL	96T	6	5.5-7.5	50	1,565	25.7	8.5	6.8	11.5	809	23.5
		1020079	205/65R16	95T	6	5.5-7.5	51	1,521	26.3	8.5	6.5	11.5	788	22.8
1020080		215/55R16 XL	97T	7	6.0-7.5	50	1,609	25.1	9.2	6.7	11.5	827	23.7	
1017492		215/60R16 XL	99T	6.5	6.0-7.5	50	1,709	26.1	9	7.1	12	794	25.7	
1017487		215/65R16	98T	6.5	6.0-7.5	51	1,653	27	8.9	7.1	11.5	769	25.1	
1020081		215/70R16	100T	6.5	6.0-8.0	51	1,764	27.8	8.7	6.5	11.5	748	27.1	
1017491		225/60R16 XL	102T	6.5	6.0-8.0	50	1,874	26.6	9.3	7.4	12	780	26.9	
1020082		225/65R16	100T	6.5	6.0-8.0	51	1,764	27.4	9.3	7.1	11.5	759	28.6	
*1020083		225/70R16	103T	6.5	6.0-7.5	51	1,929	28.3	8.9	6.7	11.5	734	29.3	
1020532		235/70R16 XL	109T	7	6.0-8.0	50	2,271	28.9	9.4	7	11.5	720	32.1	
*1020534		235/75R16	108T	6.5	6.0-8.0	51	2,205	29.7	9.1	7	11.5	699	31.1	
17		1020086	215/45R17 XL	91T	7	7.0-8.0	50	1,356	24.5	8.7	7.2	11.5	848	20
		1017485	215/55R17 XL	98T	7	6.0-7.5	50	1,653	26.3	9.1	7.1	11.5	790	26.2
	*1020087	215/60R17	96T	6.5	6.0-7.5	51	1,565	27.1	9	6.8	11.5	768	25.8	
	1020088	215/65R17	99T	6.5	6.0-7.5	51	1,709	27.9	8.8	6.8	11.5	744	26.8	
	*1020089	225/45R17 XL	94T	7.5	7.0-8.5	50	1,477	24.8	9.2	7.5	11.5	837	21.3	
	1017482	225/50R17 XL	98T	7	6.0-8.0	50	1,653	25.9	9.7	7.1	11.5	802	26.1	
	1017483	225/55R17 XL	101T	7	6.0-8.0	50	1,819	26.8	9.6	7.1	11.5	776	26.4	
	1017486	225/60R17	99T	6.5	6.0-8.0	51	1,709	27.6	9.3	7.4	11.5	751	27.6	
	1017488	225/65R17	102T	6.5	6.0-8.0	51	1,874	28.5	9.1	7.4	11.5	729	29.4	
	1020535	235/45R17 XL	97T	8	7.5-9.0	50	1,609	25.2	9.6	7.3	11.5	824	24.5	
	1017489	235/55R17 XL	103T	7.5	6.5-8.5	50	1,929	27.2	9.9	7.8	12	765	29	
1020091	235/65R17 XL	108T	7	6.5-8.5	50	2,205	28.9	9.5	7.4	11.5	718	32.4		
18	1017476	225/60R18	100T	6.5	6.0-8.0	51	1,764	28.6	9.3	7.1	11.5	725	27.1	
	*1020093	235/55R18	100T	7.5	6.5-8.5	51	1,764	28	10.2	7.4	11.5	741	28.8	
	*1020094	235/60R18 XL	107T	7	6.5-8.5	50	2,149	29	9.6	7.4	11.5	716	32.5	
	1017473	245/45R18 XL	100T	8	7.5-9.0	50	1,764	26.7	9.8	8.1	11.5	779	27.7	
	1020095	255/55R18 XL	109T	8	7.0-9.0	50	2,271	28.9	10.9	8	11.5	719	33.3	
	*1020533	265/60R18	110T	8	7.5-9.5	51	2,337	30.4	10.9	8.3	11.5	683	36.7	

PR: Ply Rating / LR: Load Range / MR: Measuring Rim / OD: Overall Diameter / SW: Section Width / TW: Tread Width / TD: Tread Depth / RPM: Revolution Per Mile /



4 Wide Grooves

Wet



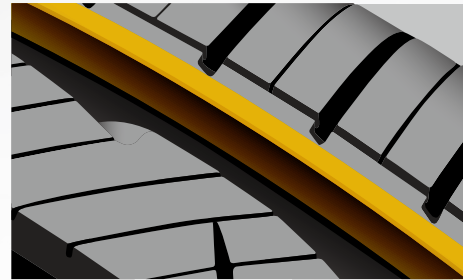
Four wide, straight tread grooves provide efficient water drainage in wet conditions for improved vehicle stability.

S FIT AS | G FIT AS | X FIT HT | X FIT AT



Noise Reduction Block

Noise



Rib block sections at the tire's edge help to prevent noise generated by the road surface, ensuring a quiet ride.

S FIT AS | G FIT AS | X FIT HT



Zig Zag Block Design

Traction



A zig zag block edge design increases traction in dry, muddy and snowy conditions.

X FIT HT | X FIT AT



Rim Cushion

Durability



A special rubber compound serves as a rim cushion where the tire's bead meets the wheel to prevent damage from external impacts when driving in harsh conditions. This rim cushion also offers more stable driving performance.



Tie-Bar

Dry



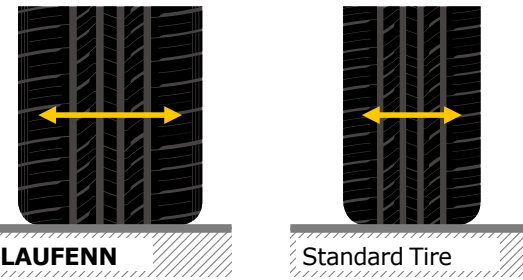
Tie bars that connect the shoulder blocks reinforce the stiffness of the shoulder tread for maximum cornering grip and minimized irregular wear.

S FIT AS | G FIT AS



Wide Tread Design

Handling



A wide tread design ensures stable driving by maintaining top-of-the-line grip in any season and in any road condition, on or off-road.

S FIT AS | G FIT AS | X FIT HT | X FIT AT



3D Sidewall Edge Block

Off Road



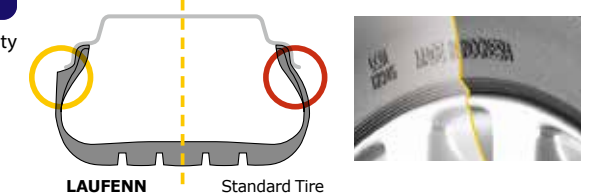
A 3D-edged sidewall block design protects tires from external impact damage and offers enhanced traction in muddy or snowy conditions.

X FIT AT



Rim Protector

Durability



A rim protector designed into the tire's bead section helps to prevent external impact damage that can occur when driving in rugged terrain and also helps protect vehicle wheels.

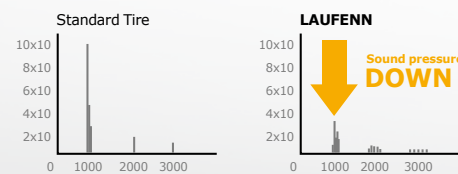
S FIT AS | X FIT AT



Optimized Stiffness Distribution Design

Comfort

An optimized five variable pitch stiffness distribution tread block design ensures minimum vibration and noise as well as improved riding comfort.

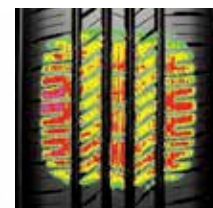


S FIT AS | G FIT AS | I FIT ICE



Long Mileage and Even Tread Wear

Wear life



An optimized tire profile designed by advanced computer-aided simulations improves braking performance and wear by evenly distributing weight over the tire's contact patch.

S FIT AS | G FIT AS



3D Vibration Analysis Technology

Comfort

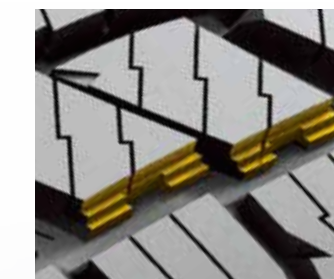
The center and shoulder tread pattern of the S FIT AS has been designed using 3D vibration analysis technology to ensure uniform driving performance and enhanced braking performance for more predictable and reliable operation.

S FIT AS | G FIT AS

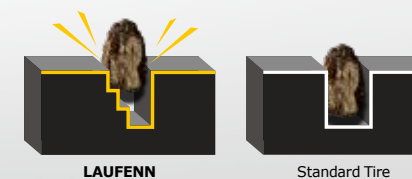


Stone Ejector

Durability



The stepped groove inside tread block design of tires prevents stones from lodging in its tread, protecting the tire from external damage.

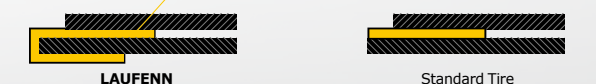
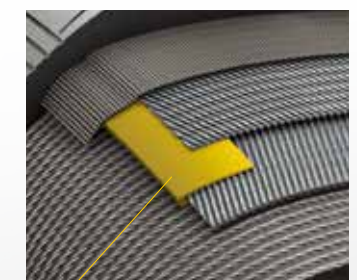


X FIT HT | X FIT AT



Belt Edge Tape

Durability



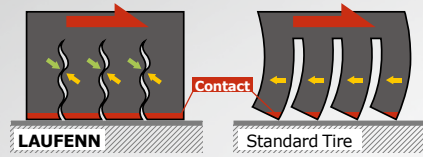
A folded belt edge tape design is incorporated between the tire's two tread belts to improve handling performance at high speeds.

S FIT AS | G FIT AS | X FIT HT | X FIT AT



Snow 3D Kerf

Snow



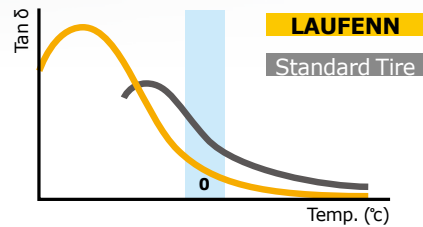
The 3D wave-patterned kerf design used on the tires provide improved grip and handling performance by minimizing block movement when driving.

X FIT HT | I FIT ICE



New Winter Compound

Snow



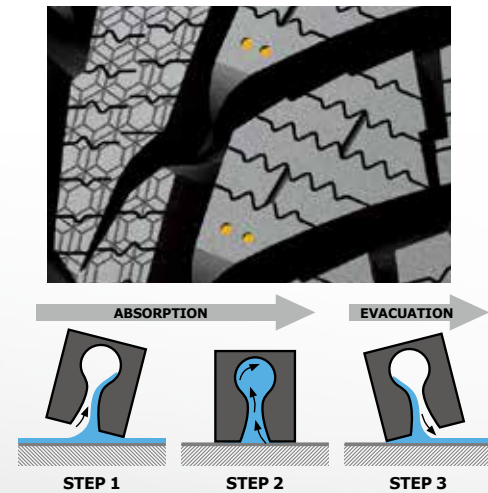
The application of a new winter rubber compound with improved low temperature performance enhances grip for competent winter driving.

I FIT ICE



Absorbing Holes

Wet



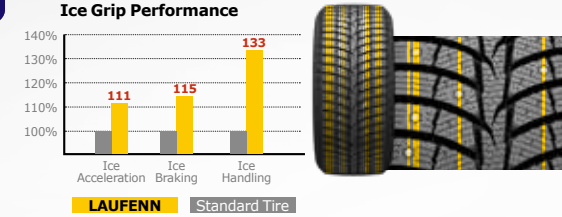
Small holes designed into the tire's tread blocks absorb water to help maximize performance in wet and slushy conditions.

I FIT ICE



16 Raw Stud Technology

Ice



This advanced stud pin design technique disperses the stud pin arrangement in 16 unique lines, maximizing braking and traction performance. Stud pin lines at the center improve straight line stability, cornering and handling on icy roads.

I FIT ICE



Snow Slits

Ice



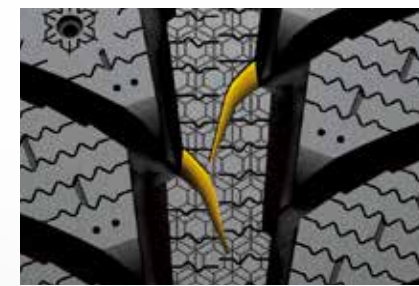
An advanced snow slit design ensures maximum edge grip effect on icy roads for better traction.

I FIT ICE



Claw Edge

Ice



A claw-shaped 3D edge design in the tire's center tread blocks helps to improve traction performance on snowy and icy roads.

I FIT ICE

LOAD INDEX & SPEED SYMBOL

The symbol that shows a tire's performance level consists of two parts: Tire performance is marked by Load Index (LI) and Speed Symbol (SS). LI refers to the maximum load that one tire can support, and SS refers to the maximum speed that a tire can handle.

1) Load Index

Load index is a numerical code stipulating the maximum load each tire can carry. For example, if the load index is 100, it means that a tire can carry a load up to 800kg.

LI	61	62	63	64	65	66	67	68	69	70
KG	257	265	272	280	290	300	307	315	325	335
LI	71	72	73	74	75	76	77	78	79	80
KG	345	355	365	375	387	400	412	425	437	450
LI	81	82	83	84	85	86	87	88	89	90
KG	462	475	487	500	515	530	545	560	580	600
LI	91	92	93	94	95	96	97	98	99	100
KG	615	630	650	670	690	710	730	750	775	800
LI	101	102	103	104	105	106	107	108	109	110
KG	825	850	875	900	925	950	975	1000	1030	1060

2) Speed Symbol

Speed Symbol indicates the speed at which the tire can carry a load corresponding to its load index under service conditions specified by the tire manufacturer.

Speed rating					
Code	km/h	mph	Code	km/h	mph
A1	5	3	L	120	75
A2	10	6	M	130	81
A3	15	9	N	140	87
A4	20	12	P	150	94
A5	25	16	Q	160	99
A6	30	19	R	170	106
A7	35	22	S	180	112
A8	40	25	T	190	118
B	50	31	U	200	124
C	60	37	H	210	130
D	65	40	V	240	149
E	70	43	Z	over 240	over 149
F	80	50	W	270	168
G	90	56	(W)	over 270	over 168
J	100	62	Y	300	186
K	110	68	(Y)	over 300	over 186

TIRE PRESSURE

The tire inflation pressure is directly related to safety. Therefore, tire pressure must be checked regularly, and proper maintenance can prolong the lifespan of the tires.

Importance of Tire Pressure

Optimum air pressure should be maintained to ensure safety, driving performance, tire life and fuel cost. Tires have been known to lose up to one pound per square inch (psi) every month. Therefore, it is important to check all tires, even the spare, at least once a month or before a long trip. Recommended Interval: Tire pressure should be inspected monthly.

MAINTENANCE

Tire wear directly affects the driver's safety and the performance of the vehicle. It is essential for the driver to be well-informed about how to check for tire wear regularly.

Importance of Checking for Tire Wear

The deeper the groove, which is on the surface of the tire, the more grip a tire will have. You can prevent danger of unexpected accidents by checking for tire wear on a regular basis.

Recommended Interval Between Check-ups

Laufenn recommends that you check for tire wear once each month. Also, make sure to do a check once more after long distance travel.

Checking for Tire Wear with Tire Tread Wear Indicator

You can check for the depth of the groove by using a Tire Tread Depth Gauge or by observing the Tread Wear Indicator on the side of the tire. To ensure optimum safety and performance, tires should be replaced when the tire groove wears below 2mm to 3mm.

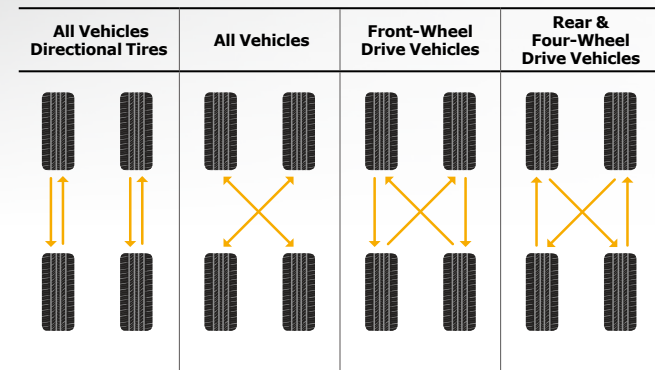
ROTATION

Periodic rotation prevents uneven wear, prolonging the life of your tires.

The Importance of Tire Rotation

Periodic tire rotation helps extend the life of your tires and improve performance level. For your safe driving and saving money, please refer to the rotation method below.

Four Tire Rotation



BALANCE

Tire balance must be checked if there is unexpected vibration or noise from a tire.

The Importance of Tire Balance

Tire balancing is a process of compensating for the weight of the tire and wheel after assembly. If not properly balanced, it increases vibration and cause stress on your vehicle.

When to Inspect for Tire Balance

If you feel a vibration from a tire, visit a mechanic where he or she will attach a balancing weight to the exterior or interior of the wheel to counteract centrifugal forces acting on the heavy areas when the wheel is turning.

How to Balance Tire and Wheel

To balance the tire and wheel assembly, a balance weight can be used when a certain spot is lighter or heavier than it should be.

WHEEL ALIGNMENT

To prevent vibration, skidding, noise, and wear, wheel alignment inspection is necessary.

The Importance of Wheel Alignment

The purpose of wheel alignment is to adjust front-wheel handling while driving. If wheel alignment is off, tire life is shortened while car and mileage performance also decrease.

Types of Wheel Alignment

To find out more information, visit Laufenn web site:

www.Laufenn.com

When to Check Wheel Alignment

Laufenn recommends to inspect wheel alignment every year or every 12,000 miles. An inspection is required:

1. After a car accident.
2. After tire replacement.
3. When there is uneven wear on a shoulder.
4. When the steering wheel is unstable and/or vibrating.
5. When riding is uncomfortable or fuel efficiency gets worse.

REPLACEMENT

In order to ensure a safe and comfortable ride, it's strongly recommended that all drivers know when and how to replace tires.

The Importance of Tire Replacement

Timely replacement of tires is critical for driver safety and also affects vehicle lifespan and performance.

When to Replace a Tire

1. In the case of severe tire erosion.
2. In the case when repair is impossible due to tire puncture.

How to Replace a Tire

In the case of a damaged tire and wheel, professional consultation is recommended. Tire replacement should only be done by a trained and highly experienced technician.

1. Remove a tire and wheel from a vehicle.
2. After separating the tire and wheel, replace with a new tire.
3. Check tire balance.
4. Install the newly fitted tire and wheel on a vehicle.

Tips for Tire Replacement

It is the best to replace two tires on one axle at the same time. Replacement of only one tire of two on the same axle usually causes the vehicle to become unbalanced.

WARRANTY TERMS

This limited warranty applies to the original purchaser of any new tire manufactured by Hankook Tire and Technology bearing Department of Transportation prescribed tire identification numbers. Eligible tires shall be used on the vehicle on which they were originally installed according to the vehicle manufacturer's or Laufenn's recommendation. This warranty applies if all the following qualification requirements are met:

- The tire was purchased after January 1, 2020.
- The tire is a size, load rating and speed rating equal to or greater than that recommended by the vehicle manufacturer.
- The tire has not become unserviceable due to a condition listed under what is not covered.
- The tire is 6 years or older from the date of manufacture or 6 years from the date of purchase.

WHAT IS WARRANTED AND FOR HOW LONG

Should any tire covered by this limited warranty become unusable due to a workmanship or material related condition during its usable tread life (more than 2/32" remaining tread), Laufenn will give a credit on the following conditions:

1. During the first 2/32nds of the original usable tread and one year from date of purchase: Tire will be replaced with a comparable new Laufenn produced tire free of charge, mounting and balancing included. Additional installation charges, taxes, fees, and any other charges in connection with the replacement of the tire are required to be paid by the owner.
2. After the first 2/32nds of the original usable tread or after one year from date of purchase, whichever occurs first: The amount of the credit will be determined by multiplying the pre-determined adjustment price for the tire (excluding taxes) by the percentage of original tread depth remaining on the tire.

* Free replacement workmanship warranty is not applicable to snow tires.

WHAT IS NOT COVERED

This limited warranty does not apply to tires which are being serviced under the following conditions:

- Outside of the United States or Puerto Rico.
 - Willful Abuse, Collision, Wreck, or Fire.
 - Continued use while flat or severe under / over inflation.
 - Road Hazards including without limitation, puncture, cut, impact break, stone drill, bruise, bulge, snag, collision.
 - Premature or irregular wear due to vehicle mechanical reason.
 - Conditions resulting from without limitation, improper mounting/demounting, under inflation, improper tire size, improper repair, defect in vehicle, abuse.
 - Ozone or weather cracking on tires over four (4) years old from the date of manufacture.
 - Ride disturbance complaints after the first 2/32s of tread wear, or after the first year from date of purchase, whichever comes first.
 - With 2/32" or less remaining depth.
 - With the serial number cut or buffed.
 - Racing & off road use and Misapplication.
 - Loss of time or use, inconvenience or any incidental or consequential damage.
- * Note: Consequential damage mentioned above may not apply to you based on States limitation.

OWNER'S GENERAL OBLIGATION

In order to be eligible for Laufenn's limited warranty program, the owner must observe the following:

- Present the tire to an authorized Laufenn dealer in the United States of America or Puerto Rico.
- Submit or present a copy of the original purchase receipt.
- Complete and sign a Hankook (Laufenn) Claim Form which is available at any authorized dealer.
- End users should complete the warranty card which is available at any authorized Laufenn dealers for tread wear mileage warranty and mail it to HANKOOK Tire America Corp. (333 Commerce Street, Suite 600, Nashville, TN 37201. Attn: Technical Department) within 30 days from the date of purchase.
- To take advantage of the mileage warranty, you must submit tire rotation record which proves that all tires are rotated at least every 7,500 miles.
- If the tire owner abuses the tires by failing to follow the obligations, but not limited to observe safety warnings, maintain proper inflation pressure, maintain vehicle alignment and tire rotation, expected tire performance or life may not be achieved and your safety cannot be ensured.

Limited Warranty

TREADWEAR MILEAGE WARRANTY

Laufenn provides very competitive treadwear mileage Warranty as follows:

TREADWEAR MILEAGE WARRANTY	TIRE TYPE	REMARKS
60,000	X FIT HT, G FIT AS	P-Metric Only
45,000	S FIT AS, X FIT AT	P-Metric Only

- If the above eligible tire wears out (wears down to 2/32" remaining depth before the warranty miles under the normal passenger use, Laufenn will make an allowance for unused service toward the purchase of a new tire of the same size and type, prorated on warranted miles.
- The replacement allowance will be calculated by percentage of the warranted miles not received, multiplied to the pre-determined adjustment price of the tire at the time and place of the adjustment.
- To take advantage of this warranty, the owner shall submit warranty card which records the purchasing & vehicle information within 30 days from the date of purchase. (Warranty card must be mailed to HANKOOK Tire America Corp.)
- To make a claim, tire rotation record shall be presented along with the claimed tire. (The cost of mounting, balance and other service charges or taxes shall be paid by the customer)
- This warranty is not applicable to original equipment tires.

30 DAY FREE TRIAL*

Laufenn is offering a 30 Day Free Trial to the following eligible tires:

- If you are not 100% satisfied for any reason with your
- S Fit ASLH01
 - X Fit HTLD01
 - G Fit AS.....LH41
 - X Fit ATLC01

purchase, return the tires along with proof of purchase back to place of original purchase within 30 days for a new set of Hankook tires. Hankook will cover mounting and balance fees.

(* Exclusions and limitations may apply

Requirements and Limitations:

- 30 Day Free Trial only applies to purchase of 4 ~ 6 tires per vehicle (Purchases of 1 ~ 3 tires are not eligible).
- Customer may exchange 1 - 6 tires from the set, for an equivalent number of the same tire or a different Laufenn or Hankook Tire.
- Mounting and balancing cost are included. (Valve Stems are extra)
- Tires must be free of any damage due to misuse, road hazard, mechanical issue, and/or any racing activity wear.
- Replacement tire must be installed on original purchase Vehicle.
- Only original purchase is covered by 30 Day Free Trial. Replacement set is not covered by 30 Day Free Trial.

- Original purchaser must present proof of purchase.
- Replacement must be done at original place of purchase.
- If replacing with more expensive tire, difference is paid by Customer (including sales tax). If exchanges is less, you will be given a credit for the difference.
- Customer is responsible for all applicable taxes.
- Please contact Hankook Customer Service if you have any questions at 1-800-HANKOOK - option

ROAD HAZARD WARRANTY

If a tire is rendered unserviceable due to a non-repairable road hazard, it must meet following guidelines:

- Tire must be listed in eligible products for Road Hazard
- Tire must be within first 2/32^{nds} of its original tread depth
- Tire must be within one year from date of purchase.

Qualifying tires will be replaced free of charge with a comparable Hankook produced tire. Adjustment procedure is prescribed in the Owner's General Obligation section. Taxes, mounting, balancing and service charges are not included.

*Exclusion:

- This warranty is not applicable to Original Equipment (OE) tires.
- Repairable punctures are not covered under this warranty.
- Tire(s) replaced free under Road Hazard Warranty are not eligible for Road Hazard Warranty in the future
- Does not apply to LT-metric tires.

- S Fit ASLH01
- X Fit ATLC01
- G Fit AS.....LH41
- i Fit IceLW71
- X Fit HTLD01

Eligible Tires:



DISCLAIMER

This warranty, or any warranty stated or referred to herein, is exclusive and in lieu of any other warranty regarding the quality of Hankook tires, whether expressed or implied and remedies for breach thereof shall be limited to those specifically provided herein. Any warranty of merchantability of fitness for any particular purpose, if made, is limited in duration to the effective time period of this limited warranty.

SAFETY AND WARRANTY SYMBOLS



M+S
Mud and Snow

Limited Mileage Warranty

ADDITIONAL INFORMATION OR CUSTOMER SERVICE

If you have any questions on product warranty, please first contact your nearest Laufenn Dealer. For dealer information, or if your question has not been handled to your satisfaction, contact the HANKOOK Tire Technical Department.

HANKOOK TIRE AMERICA CORPORATION
333 Commerce Street, Suite 600
Nashville, TN 37201
1-800-HANKOOK

For warranty information, please visit:
www.Laufenn.com or call 1-800-HANKOOK.

Claim Adjustment Procedure

For all claims for adjustment, a claim form must be filled out. Completed claim forms should be mailed to the Hankook Tire America Corp. office. Do not ship tires to Laufenn. Laufenn reserves the right to demand physical inspection of the tires on which adjustment is claimed. If Laufenn exercises its right to inspect, it will do so by sending a written request to ship the tires to Laufenn's (Hankook's) Claim Center.

In determining the cause for removal from service, always examine both the inside and outside of the tire body. If the tire is not entitled to adjustment, Laufenn will advise the dealer; explain the reason for the failure and advise him/her of preventive maintenance.

A. If the examination shows that the tire is adjustable under the terms of our Warranty:

- Be sure that the tire returned by the consumer bears our name and DOT number.
- Measure the remaining tread depth in 32nds of an inch. Be sure to measure in grooves nearest the center line of the tire.
- Refer to ORIGINAL TREAD DEPTH for the size and type of the returned tire. Use the ORIGINAL TREAD DEPTH CHART to determine the percentage of credit due based on remaining tread depth.
- Fill out the CLAIM ADJUSTMENT FORM completely, sign it yourself and have it signed by the owner of the tire.

B. Fill out each claim form with the following information for each tire being adjusted:

This form must be accurately completed by the dealer and signed by the owner of the product. Incomplete forms will not be accepted.

- | | |
|--|--|
| 1. Pattern Name | 16. Vin Number |
| 2. Month, Day, & Year of Claim | 17. Size, Type, Ply-Rating of Tire |
| 3. Distributor's Contact Information | 18. Material Number |
| 4. Dealer's Contact Information | 19. MFG's Serial Number (commercial use only) |
| 5. Fleet (commercial use only) Contact Information | 20. D.O.T. Number of Tire |
| 6. Owner's Contact Information | 21. Air Pressure Used |
| 7. Vehicle Year | 22. Remaining Tread Depth (Inch) |
| 8. Vehicle Make | 23. Road Force Measurement or Total Balance Weight |
| 9. Vehicle Model | 24. Tire Position |
| 10. Tire Installation Date | 25. Claim Reason |
| 11. Install Miles | 26. Number of Retreads |
| 12. Removal Miles | 27. Additional Notes Regarding Claim |
| 13. Total Miles | 28. Signature of Dealer |
| 14. Vehicle Usage | 29. Signature of Owner (User) |
| 15. Original Equipment (Yes/No) | |

C. Marking tires for physical inspection:

Please mark all tires being shipped to our Claim Center in the following manner.

- Clearly state dealer's name.
- Mark over identification (DOT) number with crayon and make clearly legible (Disregard if DOT has been cut & sent in with claim).
- Tire condition - circle area of failure (a two-inch crayon mark around the condition). Ride complaints should be marked as "O.R."
- Claim number close to identification number using the last two digits of claim number. Example: If claim number is "H-00123" and the item is number "1", then the number you would mark on the tire would be "23-1".
- Attach a copy of all claim forms to the packing list. vehicle alignment and tire rotation, expected tire packing list.

D. Forwarding claim forms to Hankook:

Retain "Dealer's Copy" and retain copies of any other supporting documents and/or photos for dealer records, and forward all other copies to:

Forward all copies to:

Hankook Tire America Corp.
 ATTN: TECHNICAL DEPARTMENT
 333 Commerce St. Suite 600
 Nashville, TN 37201

E. For photo inspection:

Accumulation of 29 tires or less: Enclose cut-out DOT numbers and a photograph of each tire, showing the claimed condition, with the claim form.

When an adjustment is received, Hankook will...

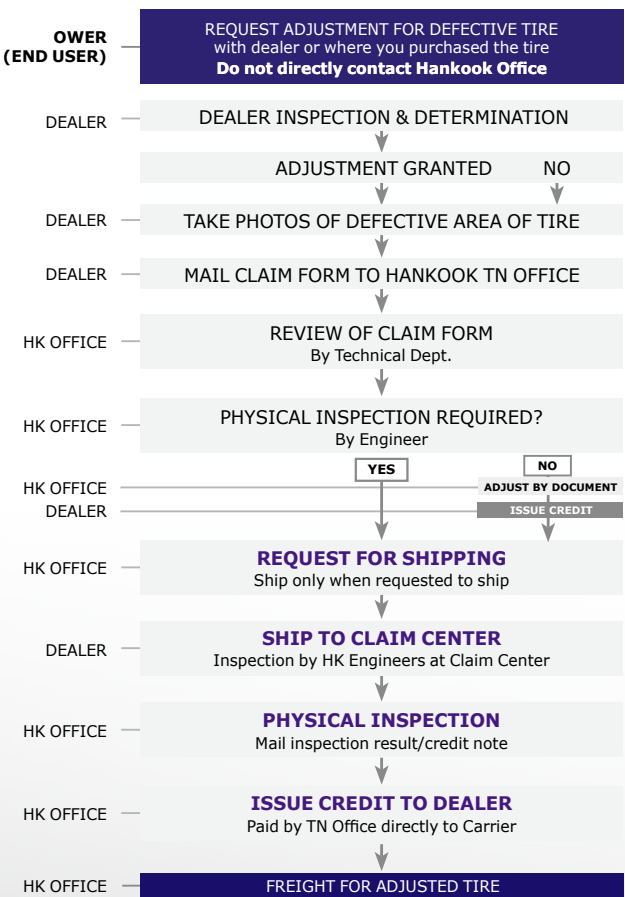
Review the claim and either issue credit or request the tires to be shipped to our claim center for physical inspection. If we decide a physical inspection is necessary, we will send you a written request to ship the tires to a designated location. (NOTE: DO NOT send tires to our claim centers unless you are requested to do so.)

Tires must be held by you for thirty days or until credit or further notice has been received whichever is later. If tires are requested to be shipped for inspection during this period and are not available, claim will be disallowed and adjustment credit will not be issued.

Claim Procedure Flow Chart Remember:

- Adjustments will be made on a prorated basis, calculated on remaining usable tread depth and the predetermined adjustment price if there is no applicable special warranty program.
- Usable tread depth is the original depth less 2/32nds of an inch.
- When the tire is worn down to 2/32nds, the tire is considered worn out and the warranty expires.
- Tires with DOT or serial numbers previously cut or mutilated will not be adjusted.
- The result of physical inspections by Laufenn will prevail over your findings to the contrary subject to your right to legally contest our findings.

BY WHOM STEPS TO TAKE



NOTE : No freight will be paid where shipment of tire was not required. Where tires are shipped to wrong address or shipped where not requested, freight will be paid by shipper.

* Do not ship the Claim Tire Advise Dealer by Letter


Freight Policy

- After an accumulation of 30 tires or greater OR requested by Hankook Tire America Corp., Hankook will pay freight charges for adjustment shipment. Tires shipped on your own, not at Hankook's request, will be at your own expense. If sent collect, shipment will be refused and returned to you.
- When writing the bill of lading:
 - Indicate Hankook Tire America Corp, 333 Commerce St. Suite 600 Nashville, TN 37201 as the 3rd party to be billed
 - The classification you assign to the adjustment tires should be: "Class #60, Item #196000, Scrap Rubber Tires - having a value only for reclamation of raw material at \$.90 per pound"
- Average weights for adjustment are:
 - All Passenger Tires: 20 Pounds/Each
 - Light Truck Tires: 40 Pounds/Each
 - Medium Truck Tires: 110 Pounds/Each
 - Tube Passenger Tires: 2 Pounds/Each
 - Tube Truck Tires: 8 Pounds/Each
- If you wish to have rejected tires returned to you, please so indicate in the comments section of the Hankook Tire Claim Form, along with a point of contact for shipping. Any tires that you request to be returned after a physical inspection will be shipped back to you at your own expense. Otherwise, all tires not accompanied with a return request will be scrapped immediately following Hankook's inspection.
- Please use one of the following freight companies to ship tires/tubes to Hankook's Claim Centers.

To: Dayton, NJ: 18 Thatcher Road Dayton, NJ 08810
 • CH Robinson
 • YRC

To: 10825 Production Ave, Fontana, CA 92335
 • CH Robinson
 • YRC

NOTE : Freight will not be paid by Hankook unless one of the above companies is used. Exceptions will be taken only in cases where none of these freight lines can pick-up in your area, and you further obtain our approval in advance.



TIRE WARRANTY CLAIM FORM

HANKOOK TIRE AMERICA CORP.
 Technical Department
 333 Commerce Street, Suite 600
 Nashville, TN 37201
 Tel: 1-800-HANKOOK (426-5665), opt 1

Pattern Name: 1

DATE OF CLAIM: 2

H

DISTRIBUTOR 3		DEALER 4		FLEET (Commercial Use Only) 5		OWNER-USER 6	
NAME:	NAME:	NAME:	NAME:	NAME:	NAME:	NAME:	NAME:
ADDRESS:	ADDRESS:	ADDRESS:	ADDRESS:	ADDRESS:	ADDRESS:	ADDRESS:	ADDRESS:
PHONE NUMBER:	PHONE NUMBER:	PHONE NUMBER:	PHONE NUMBER:	PHONE NUMBER:	PHONE NUMBER:	PHONE NUMBER:	PHONE NUMBER:
ACCTR:	ACCTR:	ACCTR:	ACCTR:	ACCTR:	ACCTR:	ACCTR:	ACCTR:

THIS FORM MUST BE ACCURATELY COMPLETED BY THE DEALER AND SIGNED BY OWNER USING THE PRODUCT. INCOMPLETE FORMS WILL NOT BE ACCEPTED.

VEHICLE INFORMATION												
YEAR 7	MAKE 8	MODEL 9	INSTALL DATE 10	INSTALL MILES 11	REMOVAL MILES 12	TOTAL MILES 13						
VEHICLE USAGE (NORMAL/ COMMERCIAL/ OFFROAD/ RACING/ ETC.) 14				ORIGINAL EQUIPMENT YES 15 NO 16	VIN NUMBER 16							

ITEM NO.	SIZE/TYPE/PLY	FOR OFFICE USE ONLY	MATERIAL NO.	MFG'S SERIAL NO. (Commercial Use Only)	D.O.T. NUMBER	PSI	32NDS REMAINING	RFV or Balance WT (OZ/GR)	Tire Position (L/LR, R/R)	CLAIM REASON	# OF RETREADS
1											
2											
3	17		18	19	20	21	22	23	24	25	26
4											
5											
6											

Additional Notes: 27

I hereby certify that the above described merchandise was sold in New/Unused condition to the Owner-User identified above and that all the foregoing statements are actually correct. Having discussed this adjustment claim in detail with the Owner-User, I am convinced that the merchandise presented for adjustment was not involved in a motor vehicle accident.

I hereby certify that I am the original Owner-User of the above described merchandise and that all the foregoing statements are factually correct.

DEALER'S SIGNATURE 28
 OWNER-USER'S SIGNATURE 29

TIRES MUST BE HELD UNTIL FURTHER NOTICE, OR UNTIL CREDIT IS RECEIVED. SHOULD TIRES BE REQUESTED FOR INSPECTION AND BE UNAVAILABLE, ADJUSTMENTS CREDIT WILL NOT BE ISSUED.

INSTRUCTIONS: 30 OR MORE PLYT OR 6 OR MORE TRUCK / BUS TIRES, CALL TECHNICAL DEPT. PLEASE INSERT:
 - CUT OUT ONE COMPLETE D.O.T. NO. PER TIRE (NOT APPLICABLE TO TRUCK/BUS TIRE CLAIMS)
 - PHOTOS CLEARLY SHOWING CLAIMED CONDITION (MIN 1 PER TIRE)
 - ALL SUPPORTING DOCS (PURCHASE, MAINTENANCE, REMOVAL, ETC)
 RETAIN COPY FOR YOUR RECORDS.
 RETURN DOCUMENTATION TO: HANKOOK TIRE AMERICA CORP.
 4401_0220_01

Please fill the following items in completely:

- Pattern Name
- Month, Day, & Year of Claim
- Distributor's Contact Information
- Dealer's Contact Information
- Fleet (commercial use only) Contact Information
- Owner's Contact Information
- Vehicle Year
- Vehicle Make
- Vehicle Model
- Tire Installation Date
- Install Miles
- Removal Miles
- Total Miles
- Vehicle Usage
- Original Equipment (Yes/No)
- VIN Number
- Size, Type, Ply-Rating of Tire
- Material Number
- MFG's Serial Number (commercial use only)
- D.O.T. Number of Tire
- Air Pressure Used
- Remaining Tread Depth (Inch)
- Road Force Measurement or Total Balance Weight
- Tire Position
- Claim Reason
- Number of Retreads
- Additional Notes Regarding Claim
- Signature of Dealer
- Signature of Owner (User)

Mounting Precaution

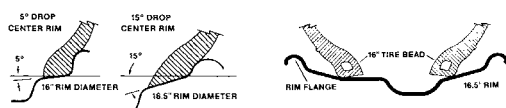
There is extreme danger in attempting to install a tire of one rim diameter on a rim of a different rim diameter.

Always replace a tire on a rim with another tire of exactly the same diameter tire designation and suffix letters.

For example, a 16" tire goes with a 16" rim. Never mount a 16" size diameter tire on a 16.5" rim. While it is possible to pass a 16" diameter tire over the lip or flange of a 16.5" size diameter rim, it cannot be inflated enough to position itself against the rim flange.

If an attempt is made to seat the tire bead by inflating, the tire bead may break with explosive force and could cause serious bodily injury or death.

Rims of different diameters and tapers cannot be interchanged. The below diagrams illustrate the difference between rims of two different tapers and diameters.



DEATH OR SERIOUS INJURY MAY RESULT FROM:

1. Tire failure due to under inflation/over loading.
2. Follow owner's manual or tire placard in vehicle.
3. Explosion of tire/rim assembly may result from improper mounting.
4. Do not exceed 40 PSI to seat beads.

* Only Specially Trained Persons Should Mount Tires.

TIRE MOUNTING PRECAUTIONS TO AVOID INJURY

1. Clean rim. Lubricate rim and beads.
2. Be sure beads are centered.
3. Do not stand over tire while inflating.
4. After beads seat, adjust to recommended inflation.

WHAT TO DO WHEN THE WHEELS DO NOT LINE UP

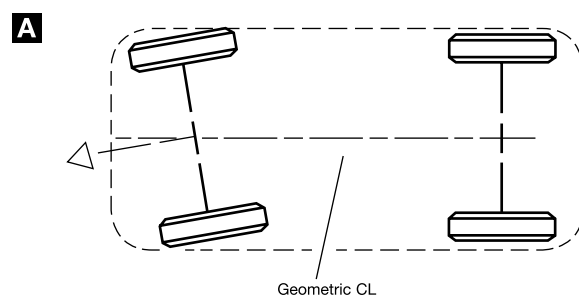
The vehicle center line of the chassis/body is found by measuring in equal distance from both sides of the vehicle.

The geometric center line is something a little different. It is determined by the midpoint between the front wheels and rear wheels.

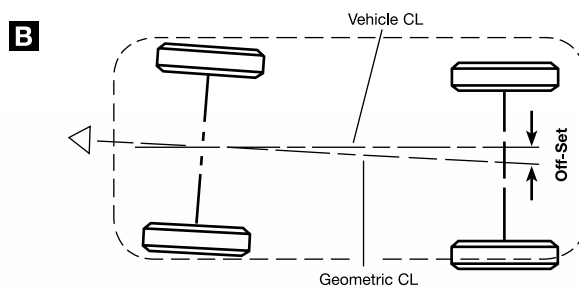
If the wheels or axles are not offset to one side, the geometric center line and vehicle center line will be identical. Should the front wheels or rear axle be slightly off center, however, the geometric center line will be at an angle to the vehicle center line. When the two lines do not coincide, tracking problems result. The rear wheels will not follow the front wheels because one set of wheels is offset from true center.

The third line we must deal with is the thrust line. This imaginary line also runs the length of the vehicle, and is determined by the total toe of the rear wheels. The thrust line divides the total toe in half. If the toe of both rear wheels is zero (which is where it should be), the thrust line would be 90 degrees to the rear axle right up the center of the car.

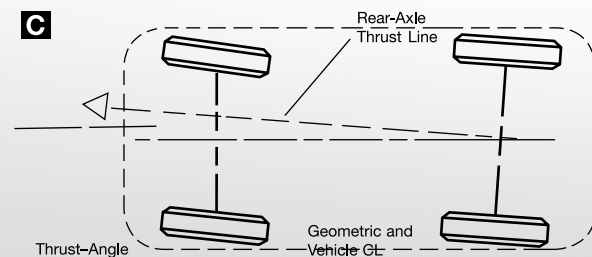
The geometric and vehicle center lines are one in the same in a properly aligned vehicle (shown in A).



If the rear axle is offset to one side (B) the geometric and vehicle center lines will be at an angle.



If the rear axle or wheels are toed to one side (C), the thrust line will not match up with the center line and the vehicle will pull—in this case to the left.



(Courtesy: Hunter Engineering)

Technical Bulletins

Laufenn Replacement Recommendations: Tire Service Life for Passenger Car and Light Truck Tires.

There is no hard and fast rule to measure service life of a tire. Tires are made with various types of raw materials and a variety of rubber compounds all having varying performance properties. Once a tire is designed and manufactured to achieve given performance property and put into use, it is still subjected to varying conditions such as weather, storage, and still further varying use conditions such as load, speed, inflation pressure, maintenance and road condition. Since all these factors affect the service life of a tire, it just is not possible to predict with accuracy or scientific validity service life of a tire.

Tires unquestionably degrade over time, whether in use or not in use. Some tire and vehicle manufacturers published warnings to consumers of their products to the effect that tires should be replaced after six years of manufacture. Certain industry organizations issued statements concurring with six year service life for tires. Depending on severity of adverse use conditions or non-use, many tires degrade fast enough to require replacement before six years of service life. Others in perfectly good conditions may enjoy service life of more than six years.

The following recommendations are intended to give consumers some idea concerning service life of a tire.

Laufenn always insists and mandates that consumers should properly maintain and periodically inspect their tires. Even if a consumer properly maintains and periodically inspects their tire, most tires will require replacement before 10 years of manufacture regardless of tread-wear. It is recommended that tires in service 10 years or more from the date of manufacture must be replaced even if it was never used.

Date of manufacture can be determined by reading the Department of Transportation (DOT) code on the sidewall. The entire code will be printed on outbound side of the tire. The DOT code will end with the week and year of manufacture. For example, a tire with DOT code reading 1GFN AVN 1408, was manufactured during the 14th week of 2008.

Consumers must regularly have tires inspected by qualified tire dealers throughout its life. Further tires that are over five years of age should be inspected at least twice a year and more frequently if the use is heavy.

Consumers must always be vigilant of their tires' performance, condition, inflation pressure, and any other issues that could affect the life of a tire.

Consumers should properly maintain, including proper inflation pressures, and periodically inspect tires. Failure to do so might result in separation or performance loss resulting in vehicle damage, injury or even death.

For original equipment tires, acquired when purchasing a new vehicle, one should follow all of vehicle manufacturers recommendations.

HANKOOK TIRE AMERICA CORPORATION
Technical Department
1-800-426-5665

